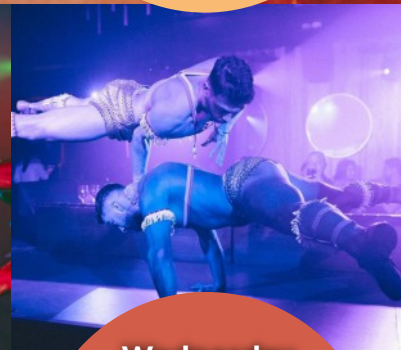




**ROTH** Capital Partners

**In conjunction with ROTH's 8th Annual London Conference, we invite you to Inca for exquisite South American plates, favorable cocktails and live Cabaret**



**After Party  
with DJ  
at Luna Lounge  
Starts at 8:30pm**

**Wednesday  
June 22, 2022  
6:00pm - 8:30pm**

**INCA  
8-9 Argyll St  
London, W1F 7TF**

**Limited Capacity | Please RSVP by June 17 to [events@roth.com](mailto:events@roth.com)**

**ROTH Capital Partners | 888 San Clemente Drive Newport Beach, CA 92660 | 800.678.9147 | [www.roth.com](http://www.roth.com) | Member SIPC / FINRA**